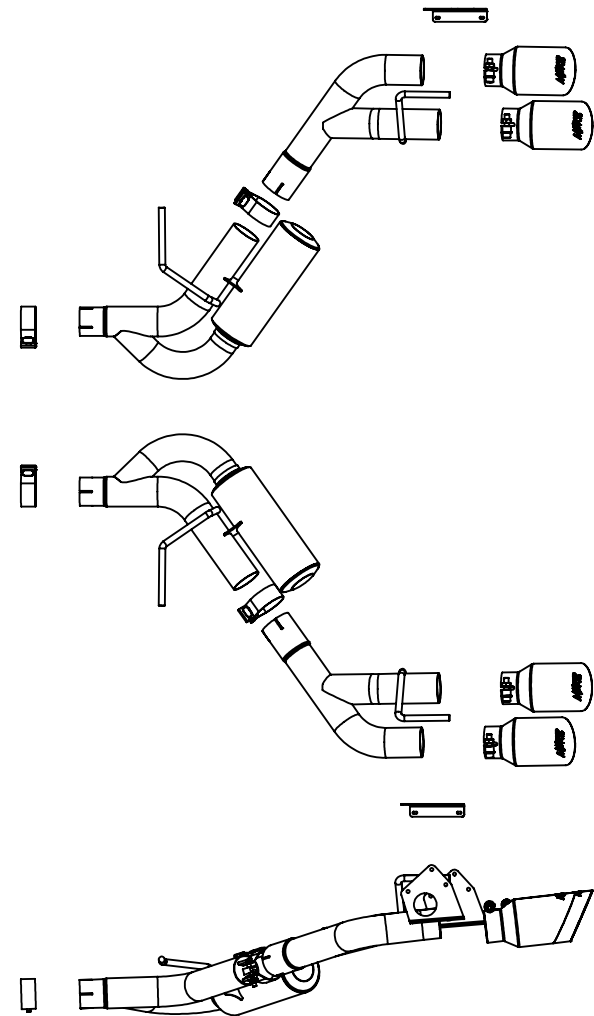
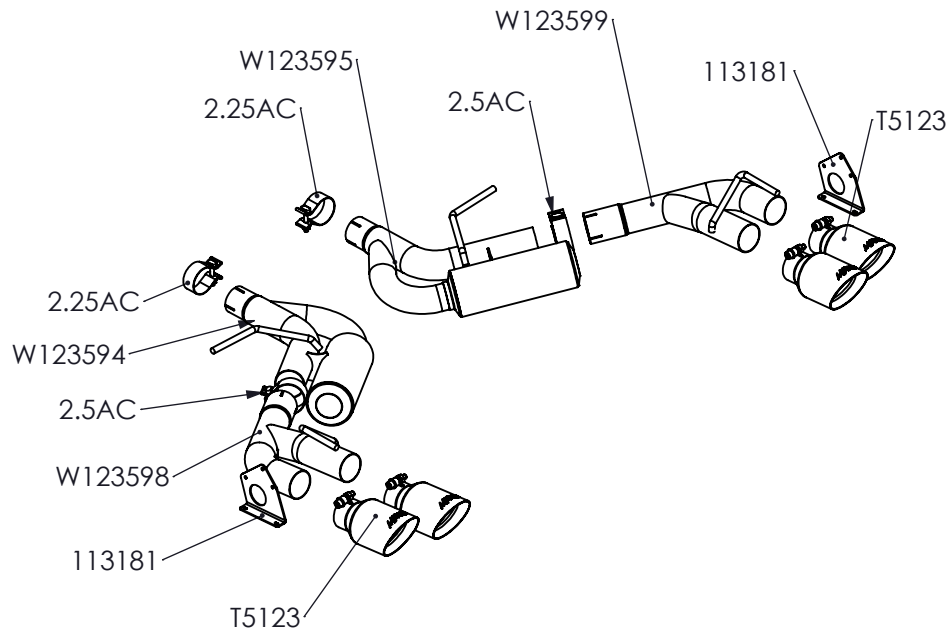


# S7039AL

2016 UP CAMARO V6 QUAD TIP [NPP] AXLE BACK.  
DOES NOT RETAIN NPP FUNCTION



ITEM NO.	PART NUMBER	DESCRIPTION	S7039AL/QTY.
1	W123594	PIPE ASSEMBLY, 2.5" HEMHOLTZ	1
2	W123595	PIPE ASSEMBLY, 2.5" HEMHOLTZ	1
3	W123598	PIPE ASSEMBLY, 2.5"	1
4	W123599	PIPE ASSEMBLY, 2.5"	1
5	113181	BRACKET, ACTUATOR	2
6	T5123	4" ANGLED DUAL WALL TIP 2 1/2" INLET 7.75" LONG	4
7	2.5AC	CLAMP, 2.5" BAND, ALUMINIZED STEEL	2
8	2.25AC	CLAMP, 2.25", BAND, ALUMINIZED STEEL	2

26-MAR-18  
REV:A

**MBRP**  
PERFORMANCE EXHAUST