



Display Mounting Arm Installation Instructions

1999-2004 Ford

Materials

1999-2004 Ford



Required Tools

1/8" Allen Wrench

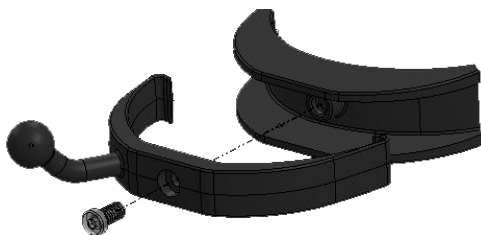
Mounting Arm Installation

STEP 1 - Carefully remove the driver's side A-pillar trim by pulling the interior trim away from the A-pillar.

STEP 2 - Using a 1/8" allen wrench, loosen the screw on the hook portion of the mount until it's only a few threads in.

STEP 3 - Peel back one corner of the backing on the adhesive and slide both pieces of the mounting arm over the A-pillar trim. Make sure that the claws are around the entire trim piece on both sides.

NOTE: Do not remove adhesive backing yet.



Mounting Arm Installation Cont'd

STEP 4 - Once the mount is positioned approximately where shown in the image below, remove the rest of the adhesive backing and press the mount firmly against the A-pillar. Then, reinstall the trim piece back onto the A-pillar.

STEP 5 - Take the mounting adapter out of the bag and snap it over the ball on the mounting arm. **NOTE:** *If the nut won't go onto the ball, the two pieces of the mounting adapter may need to be loosened.*

STEP 6 - Attach your device to the dual tab and secure the cord. Adjust the device position using the mounting bolt and/or dual tab/nut. Once positioned, tighten the nut on the mounting adapter until secure.



NOTE: *If any of your clips holding the A-pillar trim in place are missing or broken, they may need to be replaced or the A-pillar trim may need to be secured with a screw. The added weight of the mount and display may cause the trim to fall off if the trim isn't secured.*

For additional questions not found in the user guide, call:

Holley Technical Support: (888)-360-3343

Mon - Fri 8:00 am - 5:00 pm MST, Sat 8:00 am - 2:00 pm MST

**To expedite your support call, please have your Vehicle Information,
Part Number, and Serial Number ready prior to calling Technical Support.**

Holley[®]
TUNING GROUP

© Copyright 2023 Holley Inc. and subsidiaries. All rights reserved.

D1030100 Rev00 03/15/2023